



Flygt 2640.281

Table of Contents

1 Introduction.....	2
1.1 Specially approved products.....	2
2 Product Description.....	3
2.1 Products included.....	3
2.2 The data plate.....	3
2.3 Product denomination.....	3
3 Spare Parts.....	5
3.1 Exploded view.....	5
3.2 List of parts.....	6

1 Introduction

Purpose of this manual

The purpose of this manual is to provide necessary information on spare parts and accessories order.

Disclaimer

Always use genuine Flygt parts. The use of other spare parts or accessories can invalidate any claims for warranty or compensation. Xylem does not take any responsibility for damages that are caused by the use of non-original parts. For more information, contact your local sales and service representative.

Data for ordering spare parts

The following information is needed for spare part orders:

- Serial number of the product
- Part number
- Quantity of bulk material, see * in tables

1.1 Specially approved products

Qualification of personnel

Only Xylem or Xylem-authorized service personnel may undertake repair work on Ex-approved products.

Dimensional accuracy inspection

Spare parts marked with (Ex) after the part number are subject to dimensional accuracy inspection.

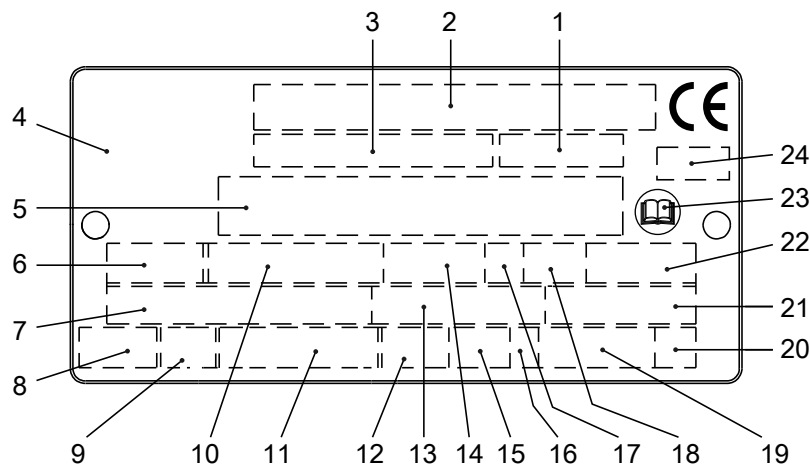
2 Product Description

2.1 Products included

Pump model	Standard	EX	MSHA	Drainage	Sludge
2640.281	X				X

2.2 The data plate

The data plate is a metal label that is located on the main body of the products. The data plate lists key product specifications. Specially approved products also have an approval plate.



1. Curve code or Propeller code
2. Serial number
3. Product number
4. Country of origin
5. Additional information
6. Phase; type of current; frequency
7. Rated voltage
8. Thermal protection
9. Thermal class
10. Rated shaft power
11. International standard
12. Degree of protection
13. Rated current
14. Rated speed
15. Maximum submergence
16. Direction of rotation: L=left, R=right
17. Duty class
18. Duty factor
19. Product weight
20. Locked rotor code letter
21. Power factor
22. Maximum ambient temperature
23. Read installation manual
24. Notified body, only for EN-approved Ex products

Figure 1: The data plate

2.3 Product denomination

Reading instruction

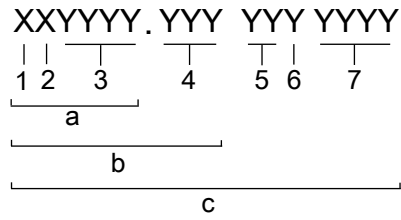
In this section, code characters are illustrated accordingly:

X = letter

Y = digit

The different types of codes are marked up with a, b and c. Code parameters are marked up with numbers.

Codes and parameters

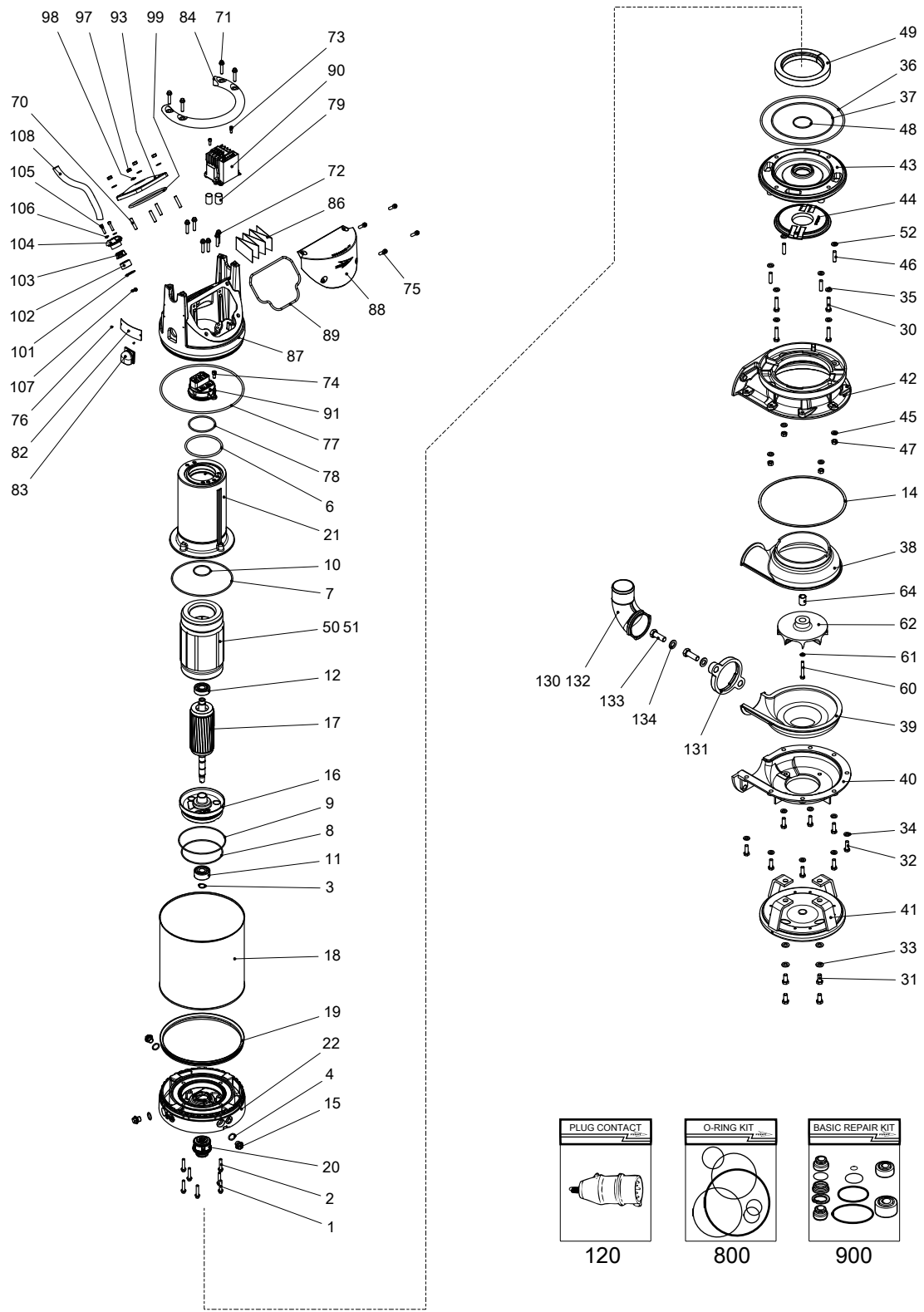


WS006265B

Type of Callout	Number	Indication
Type of code	a	Sales denomination
	b	Product code
	c	Serial number
Parameter	1	Hydraulic end
	2	Type of installation
	3	Sales code
	4	Version
	5	Production year
	6	Production cycle
	7	Running number

3 Spare Parts

3.1 Exploded view



20144B_expl_view_2630_2640_281

3.2 List of parts

Pos. No	Part. No	Denomination	Qty/Version
			281
1	81 64 92	Hexagon flange screw M8X40-A2-70	4
2	81 64 92	Hexagon flange screw M8X40-A2-70	3
3	82 58 92	Retaining ring SGA 20	1
4	82 72 95	O-ring 19.2X3 FPM	3
6	82 74 15	O-ring 114.3X5.7 NBR	1
7	82 78 29	O-ring 192.0X4.0 NBR	1
8	82 74 79	O-ring 129.5X3 NBR	1
9	82 74 82	O-ring 144.5X3.0 NBR	1
10	82 79 28	O-ring 52.5X3.0 FPM	1
11	83 30 14	Ball bearing 20X52X22.2 MM	1
12	83 33 13	Ball bearing 20X52X15 MM	1
13	90 17 52	Oil ISO VG 32	*
14	283 94 00	Gasket	1
15	428 22 17	Inspection screw	3
16	693 39 00	Bearing housing	1
17	647 84 04	Shaft unit	1
18	693 41 00	Cooling jacket	1
19	708 95 00	Seal ring	1
20	769 94 30	Mechanical seal	1
	20,1 82 68 45	Retaining ring	1
21	774 12 00	Stator housing	1
22	774 89 10	Adapter	1
30	81 41 35	Hexagon head screw M10X45-A2-70	4
31	81 41 54	Hexagon head screw M12X25-A2-70	4
32	81 41 32	Hexagon head screw M10X30-A2-70	8
33	82 35 20	Plain washer 12-A2-170	4
34	82 35 76	Plain washer 10-A4-170HV	8
35	82 35 76	Plain washer 10-A4-170HV	4
36	82 74 99	O-ring 259.3X5.7 NBR	1
37	82 71 34	O-ring 192X4.0 FPM	1
38	515 81 01	Wear protection UPPER	MT Diffusor material: Polyurethane rubber (PU)
38	515 83 00	Wear protection	HT Diffusor material: Polyurethane rubber (PU)
39	515 82 00	Wear protection	MT Diffusor material: Polyurethane rubber (PU)
39	515 84 00	Wear protection	HT Diffusor material: Polyurethane rubber (PU)
40	515 85 00	Pump housing	1
41	710 42 00	Stand complete	1
42	718 64 01	Pump housing upper	1
43	718 74 00	Seal housing cov.coa	1
44	774 39 00	Guide plate	1
45	82 35 76	Plain washer 10-A4-170HV	4

Pos. No	Part. No	Denomination	Qty/Version	
			281	
46	80 95 06	Stud M10X28-A2-70	4	
47	82 23 33	Hexagon nut M10-A4-70	4	
48	82 71 67	O-ring 57.5X3.0 FPM	1	
49	83 94 68	Pressure equalizer L=510 MM	1	
50	694 53 07	Stator 15-14-2b	6-leads 3-phase 60 Hz 2-poles 200V-208V D	1
50	694 53 05	Stator 15-14-2b	6-leads 3-phase 50 Hz 2-poles 220V-240V D 6-leads 3-phase 50 Hz 2-poles 380V-400V Y 3-phase 60Hz 440V-480V Y	1
50	694 53 06	Stator 15-14-2b	6-leads 3-phase 60 Hz 2-poles 220V-240V D 6-leads 3-phase 60 Hz 2-poles 380V Y	1
50	694 53 04	Stator 15-14-2b	9-leads 3-phase 60 Hz 2-poles 440V-460V YSER 9-leads 3-phase 60 Hz 2-poles 220V-240V Y//	1
50	694 53 01	Stator 15-14-2b	6-leads 3-phase 50 Hz 2-poles 380V-400V D 6-leads 3-phase 60 Hz 2-poles 440V-480V D 6-leads 3-phase 50 Hz 2-poles 660V-690V Y	1
50	694 53 13	Stator 15-14-2b	3-leads 3-phase 50 Hz 2-poles 380V-400V Y 3-leads 3-phase 60 Hz 2-poles 440V-480V Y	1
50	694 53 03	Stator 15-14-2b	6-leads 3-phase 60 Hz 2-poles 380V-400V D	1
50	694 53 12	Stator 15-14-2b	12-leads 3-phase 60 Hz 2-poles 440V-460V DSER 12-leads 3-phase 60 Hz 2-poles 380V-400V Y//	1
50	694 53 02	Stator 15-14-2b	6-leads 3-phase 50 Hz 2-poles 415V-440V D	1
50	694 53 08	Stator 15-14-2b	6-leads 3-phase 50 Hz 2-poles 500V D 6-leads 3-phase 60 Hz 2-poles 575V-600V D	1
50	694 53 15	Stator 15-14-2b	3-leads 3-phase 50 Hz 2-poles 500V Y 3-leads 3-phase 60 Hz 2-poles 575V-600V Y	1
50	694 53 09	Stator 15-14-2b	6-leads 3-phase 50 Hz 2-poles 525V-550V D	1
50	694 53 10	Stator 15-14-2b	6-leads 3-phase 50 Hz 2-poles 1000V Y	1

Pos. No	Part. No	Denomination	Qty/Version
			281
51	83 44 24	Closed-end splice 3-6(AWG 12-10) L=18 9-leads 3-phase 60 Hz 2-poles 440V-460V YSER 9-leads 3-phase 60 Hz 2-poles 220V-240V Y// 12-leads 3-phase 60 Hz 2-poles 380V-400V Y//	1
51	83 44 24	Closed-end splice 3-6(AWG 12-10) L=18 9-leads 3-phase 60 Hz 2-poles 440V-460V YSER 9-leads 3-phase 60 Hz 2-poles 220V-240V Y// 12-leads 3-phase 60 Hz 2-poles 380V-400V Y//	2
51	83 44 24	Closed-end splice 3-6(AWG 12-10) L=18 9-leads 3-phase 60 Hz 2-poles 440V-460V YSER 9-leads 3-phase 60 Hz 2-poles 220V-240V Y// 12-leads 3-phase 60 Hz 2-poles 380V-400V Y//	3
52	709 71 00	Gasket	4
60	81 56 58	Hexagon head screw M8X60-A4-80	1
61	82 35 74	Plain washer 8-A4-170HV	1
62	705 96 02	Impeller 234 D-impeller MT 50Hz 3-phase Maximum temperature 40 DC Material Hard-Iron TM	1
62	705 96 03	Impeller 236 D-impeller MT 60Hz 3-phase Maximum temperature 40 DC Material Hard-Iron TM	1
62	719 35 02	Impeller 259 D-impeller HT 50Hz 3-phase Maximum temperature 40 DC Material Hard-Iron TM	1
62	719 35 03	Impeller 261 D-impeller HT 60Hz 3-phase Maximum temperature 40 DC Material Hard-Iron TM	1
64	779 89 00	Sleeve unit	1
70	83 00 39	Stud	4
71	81 64 92	Hexagon flange screw M8X40-A2-70	4
72	81 64 92	Hexagon flange screw M8X40-A2-70	6
73	82 00 13	Hex.socket hd screw M6X16-A2-70	2
74	82 00 35	Hex.socket hd screw M8X30-A2-70	1
75	82 00 35	Hex.socket hd screw M8X30-A2-70	4
76	82 20 88	Drive screw 4X5-A2/A4	2
77	82 74 99	O-ring 259.3X5.7 NBR	1
78	82 78 15	O-ring 78X4 NBR	1
79	94 05 89	Insulating hose D=18 MM	*
82	630 68 00	Data plate USE 6306801 AS SPARE PART	1
83	706 11 00	Air release valve	1
84	715 05 00	Lifting handle	1
86	773 48 04	Connection plate	1
87	774 05 00	Main cover	1

Pos. No	Part. No	Denomination	Qty/Version
			281
88	774 06 00	Cover	1
89	774 07 00	Gasket	1
90	774 90 03	Starter unit	1
		Contactor unit 50Hz 3-phase 200V - 208V Not CSA approved	
		Contactor unit 60Hz 3-phase 200V - 208V CSA approved	
		Contactor unit 60Hz 3-phase 220V - 240V CSA approved	
	90,1 774 16 00	Holder	1
	90,5 84 02 51	Contactor	1
	90,8 83 02 44	Hex.socket hd screw M4X12-A4-70	2
	90,9 82 26 69	Lock nut	2
	90,13 773 42 03	Cable set	1
	90,15 573 58 03	Electric cable AWG 16;L=70MM CSA	1
90	774 90 00	Contactor unit	1
		Contactor unit 50Hz 3-phase 220V - 240V Not CSA approved	
	90,1 774 16 00	Holder	1
	90,5 84 02 51	Contactor	1
	90,8 83 02 44	Hex.socket hd screw M4X12-A4-70	2
	90,9 82 26 69	Lock nut	2
	90,13 773 42 03	Cable set	1
	90,14 773 42 04	Cable set	1
	90,15 573 58 03	Electric cable AWG 16;L=70MM CSA	1
	90,16 773 42 06	Cable set	1
90	774 90 02	Starter unit	1
		Contactor unit 50Hz 3-phase 415V - 440V Not CSA approved	
		Contactor unit 60Hz 3-phase 380V - 400V Not CSA approved	
		Contactor unit 50Hz 3-phase 380V - 400V Not CSA approved	
		Contactor unit 50Hz 3-phase 500V - 500V Not CSA approved	
	90,1 774 16 00	Holder	1
	90,5 84 02 50	Contactor	1
	90,8 83 02 44	Hex.socket hd screw M4X12-A4-70	2
	90,9 82 26 69	Lock nut	2
	90,13 773 42 03	Cable set	1
	90,14 773 42 04	Cable set	1
	90,15 573 58 03	Electric cable AWG 16;L=70MM CSA	1
	90,16 773 42 06	Cable set	1
90	774 90 05	Starter unit	1
		Contactor unit 50Hz 3-phase 525V - 550V Not CSA approved	
		Contactor unit 60Hz 3-phase 575V - 600V CSA approved	
	90,1 774 16 00	Holder	1
	90,4 762 56 00	Motor protector	1
	90,5 82 98 07	Contactor	1

Pos. No	Part. No	Denomination	Qty/Version	
			281	
	90,6	83 02 44	Hex.socket hd screw M4X12-A4-70	2
	90,7	82 26 69	Lock nut	2
	90,8	83 02 44	Hex.socket hd screw M4X12-A4-70	2
	90,9	82 26 69	Lock nut	1
	90,12	773 42 02	Cable set	1
	90,14	773 42 04	Cable set	1
	90,16	773 42 06	Cable set	1
	90,17	573 58 62	Single-core cable	1
90	774 90 04	Starter unit	Contactor unit 60Hz 3-phase 440V - 480V CSA approved Contactor unit 60Hz 3-phase 380V - 400V CSA approved	1
	90,1	774 16 00	Holder	1
	90,4	762 56 00	Motor protector	1
	90,5	84 02 50	Contactor	1
	90,6	83 02 44	Hex.socket hd screw M4X12-A4-70	2
	90,7	82 26 69	Lock nut	2
	90,8	83 02 44	Hex.socket hd screw M4X12-A4-70	2
	90,9	82 26 69	Lock nut	2
	90,12	773 42 02	Cable set	1
	90,14	773 42 04	Cable set	1
	90,16	773 42 06	Cable set	1
	90,17	573 58 62	Single-core cable	1
91	777 88 00	Terminal plate unit	Max 19A 3-phase	1
91	777 88 04	Terminal plate unit	Max 25A 3-phase	1
91	777 88 01	Terminal plate unit	3-phase	1
93	774 20 00	Cover		1
97	82 23 32	Hexagon nut M8-A4-70		4
98	82 35 16	Plain washer 8-A2-170		4
99	82 74 18	O-ring 129.3X5.7 NBR		1
101	82 40 61	Plain washer (10)-22 MM		1
102	84 37 95	Seal sleeve (10)-12 MM	SUBCAB 4G1,5 10,50 - 11,50mm Max 750V	1
102	84 37 97	Seal sleeve (14)-16 MM	SUBCAB 4G1,5+2x1,5 16 - 17mm Max 750V SUBCAB 14AWG/4 14,20 - 15,20mm Max 600V	1
102	84 37 96	Seal sleeve (12)-14 MM	SUBCAB 4G2,5 12,50 - 13,50mm Max 750V Screened 3x2,5 13,50 - 14,90mm Max 1000V	1
102	84 37 98	Seal sleeve (16)-18 MM	SUBCAB 4G2,5+2x1,5 17 - 18mm Max 750V SUBCAB 12AWG/4 17 - 18mm Max 600V	1

Pos. No	Part. No	Denomination	Qty/Version	
			281	
102	84 37 99	Seal sleeve (18)-20 MM	SUBCAB S3x2,5+3x2,5/3+S(4x0,5) 18 - 20mm Max 1000V SUBCAB 14AWG/7 18 - 20mm Max 600V	1
102	84 38 00	Seal sleeve (20)-22 MM	SUBCAB 10AWG/3-2-1-GC 20,30 - 22,30mm Max 600V SUBCAB 12AWG/7 20 - 22mm Max 600V	1
102	84 38 01	Seal sleeve (22)-24 MM	SUBCAB 10AWG/3-2-1-GC 20,30 - 22,30mm Max 600V	1
103	678 58 12	Cable clip (10)-12 MM	SUBCAB 4G1,5 10,50 - 11,50mm Max 750V	1
103	678 58 16	Cable clip (14)-16 MM	SUBCAB 4G1,5+2x1,5 16 - 17mm Max 750V SUBCAB 14AWG/4 14,20 - 15,20mm Max 600V	1
103	678 58 14	Cable clip (12)-14 MM	SUBCAB 4G2,5 12,50 - 13,50mm Max 750V Screened 3x2,5 13,50 - 14,90mm Max 1000V	1
103	678 58 18	Cable clip (16)-18 MM	SUBCAB 4G2,5+2x1,5 17 - 18mm Max 750V SUBCAB 12AWG/4 17 - 18mm Max 600V	1
103	678 58 20	Cable clip (18)-20 MM	SUBCAB S3x2,5+3x2,5/3+S(4x0,5) 18 - 20mm Max 1000V SUBCAB 14AWG/7 18 - 20mm Max 600V	1
103	678 58 22	Cable clip (20)-22 MM	SUBCAB 10AWG/3-2-1-GC 20,30 - 22,30mm Max 600V SUBCAB 12AWG/7 20 - 22mm Max 600V	1
104	686 87 00	Entrance flange		1
105	82 00 17	Hex.socket hd screw M6X25-A2-70		2
106	82 35 73	Plain washer 6-A4-170		2
107	82 00 13	Hex.socket hd screw M6X16-A2-70		1
107	82 00 13	Hex.socket hd screw M6X16-A2-70		2
108	773 47 05	Motor cable unit	SUBCAB 4G1,5 10,50 - 11,50mm L= 20m Max 750V	1
108	773 47 10	Motor cable unit	SUBCAB 4G1,5+2x1,5 16 - 17mm L= 20m Max 750V	1
108	773 47 06	Motor cable unit	SUBCAB 4G2,5 12,50 - 13,50mm L= 20m Max 750V	1
108	773 47 11	Motor cable unit	SUBCAB 4G2,5+2x1,5 17 - 18mm L= 20m Max 750V	1
108	773 47 07	Motor cable unit	SUBCAB 14AWG/4 14,20 - 15,20mm L= 16m Max 600V	1
108	773 47 15	Motor cable unit	SUBCAB 14AWG/7 18 - 20mm L= 16m Max 600V	1
108	773 47 08	Motor cable unit	SUBCAB 12AWG/4 17 - 18mm L= 16m Max 600V	1

Pos. No	Part. No	Denomination	Qty/Version	
			281	
108	773 47 16	Motor cable unit	SUBCAB 12AWG/7 20 - 22mm L= 16m Max 600V	1
108	773 47 17	Motor cable unit	SUBCAB 10AWG/3-2-1-GC 20,30 - 22,30mm L= 16m Max 600V	1
108	773 47 21	Motor cable unit	Screened 3x2,5 13,50 - 14,90mm L= 20m Max 1000V	1
108	773 47 19	Motor cable unit	SUBCAB S3x2,5+3x2,5/3+S(4x0,5) 18 - 20mm L= 20m Max 1000V	1
120	83 49 43	Plug contact	3-phase 50 Hz 380V - 415V Current range: 0 - 16A Plug combined with short cable: No cable Supply connection: CEE 5-PLUG 16A	1
120	83 49 44	Plug contact	3-phase 50 Hz 380V - 415V Current range: 0 - 32A Plug combined with short cable: No cable Supply connection: CEE 5-PLUG 32A	1
120	84 06 60	Plug contact	3-phase 50 Hz 380V - 415V Current range: 0 - 32A Plug combined with short cable: No cable Supply connection: CEE 4-PLUG 32A	1
130	260 53 60	Discharge connection	DN 75 Hose 3" aluminium	1
130	266 39 60	Discharge connection	DN 75 Thread: ISO G3A Outer Quick coupling: Storz aluminium DN 75 Thread: ISO G3A Outer aluminium	1
130	266 39 61	Discharge connection	DN 75 Thread: NPSM 3-8 Outer aluminium	1
130	260 52 60	Discharge connection	DN 100 Hose aluminium	1
130	279 07 02	Discharge connection	DN 100 Thread: ISO G4A Outer Quick coupling: Storz aluminium DN 100 Thread: ISO G4A Outer Quick coupling: Storz diam=115 mm aluminium DN 100 Thread: ISO G4A Outer aluminium	1
130	279 07 03	Discharge connection	DN 100 Thread: NPSM 4-8 Outer aluminium	1
130	260 53 50	Discharge connection	DN 75 Hose 3" Grey cast iron	1
130	260 53 51	Discharge connection	DN 75 Thread: ISO G3A Outer Grey cast iron	1
130	260 53 54	Discharge connection	DN 75 Thread: NPT 3-8 Outer Grey cast iron	1
130	260 52 50	Discharge connection	DN 100 Hose Grey cast iron	1
130	279 07 04	Discharge connection	DN 100 Thread: ISO G4A Outer Grey cast iron	1
130	279 07 08	Discharge connection	DN 100 Thread: NPT 4-8 Outer Grey cast iron	1
131	284 91 80	Connection flange		1
132	83 18 46	Coupling part	Discharge Connection DN 75 Thread: ISO G3A Outer Quick coupling: Storz aluminium	1

Pos. No	Part. No	Denomination	Qty/Version
			281
132	83 19 34	Coupling part	Discharge Connection DN 100 Thread: ISO G4A Outer Quick coupling: Storz aluminium 1
132	83 19 33	Coupling part	Discharge Connection DN 100 Thread: ISO G4A Outer Quick coupling: Storz diam=115 mm aluminium 1
133	84 34 04	Hexagon head screw M16X45-A2-70	2
134	82 35 23	Plain washer 16-A2-A-170	2
800	782 41 00	O-ring kit	NBR 1
815	648 36 05	Starter	350 3-phase 50 Hz 380V - 415 V Current range: 9 - 12,50 A Overload supervision Phase sequence indicator Supply connection CEE 5-PLUG 16A Cable gland diameter: 10 - 20 mm Not CSA approved 1
815	648 36 15	Starter	350 3-phase 50 Hz 380V - 415 V Current range: 9 - 12,50 A Overload supervision Phase sequence indicator Supply connection CEE 5-PLUG 32A Cable gland diameter: 10 - 20 mm Not CSA approved 1
815	648 36 47	Starter	350 3-phase 50 Hz 220V - 240 V Current range: 16 - 20 A Overload supervision Phase sequence indicator Supply connection on terminal Cable gland diameter: 10 - 20 mm Not CSA approved 1
815	648 36 46	Starter	350 3-phase 50 Hz 380V - 400 V Current range: 12,50 - 16 A Overload supervision Phase sequence indicator Supply connection on terminal Cable gland diameter: 10 - 20 mm Not CSA approved 1
815	648 36 45	Starter	350 3-phase 50 Hz 415V - 440 V Current range: 9 - 12,50 A Overload supervision Phase sequence indicator Supply connection on terminal Cable gland diameter: 10 - 20 mm Not CSA approved 1
815	648 36 44	Starter	350 3-phase 50 Hz 500V - 500 V Current range: 6,30 - 9 A Overload supervision Phase sequence indicator Supply connection on terminal Cable gland diameter: 10 - 20 mm Not CSA approved 1
815	554 30 05	Starter	351 3-phase 50 Hz 380V - 415 V Current range: 9 - 14 A Overload supervision Phase sequence indicator Supply connection CEE 5-PLUG 16A Cable gland diameter: 10 - 20 mm Not CSA approved 1
815	554 30 15	Starter	351 3-phase 50 Hz 380V - 415 V Current range: 9 - 14 A Overload supervision Phase sequence indicator Supply connection CEE 5-PLUG 32A Cable gland diameter: 11 - 21 mm Not CSA approved 1
815	554 30 45	Starter	351 3-phase 50 Hz 380V - 415 V Current range: 9 - 14 A Overload supervision Phase sequence indicator Supply connection on terminal Cable gland diameter: 11 - 21 mm Not CSA approved 1

Pos. No	Part. No	Denomination	Qty/Version
			281
815	554 30 74	Starter 351 3-phase 50 Hz 500V - 500 V Current range: 6 - 10 A Overload supervision Phase sequence indicator Supply connection CEE 4-PLUG 32A Cable gland diameter: 11 - 21 mm Not CSA approved	1
815	554 30 54	Starter 351 3-phase 50 Hz 440V - 500 V Current range: 6 - 10 A Overload supervision Phase sequence indicator Supply connection on terminal Cable gland diameter: 11 - 21 mm Not CSA approved	1
815	554 30 67	Starter 351 3-phase 50 Hz 220V - 240 V Current range: 17 - 23 A Overload supervision Phase sequence indicator Supply connection on terminal Cable gland diameter: 11 - 21 mm Not CSA approved	1
815	554 20 08	Starter 356 3-phase 60 Hz 200V - 208 V Current range: 20 - 25 A Overload supervision Supply connection on terminal Cable gland diameter: 13 - 25 mm CSA approved	1
815	554 20 07	Starter 356 3-phase 60 Hz 220V - 240 V Current range: 17 - 23 A Overload supervision Supply connection on terminal Cable gland diameter: 13 - 25 mm CSA approved	1
815	554 20 05	Starter 356 3-phase 50/60 Hz 380V - 415 V Current range: 9 - 14 A Overload supervision Supply connection on terminal Cable gland diameter: 13 - 25 mm CSA approved 356 3-phase 60 Hz 440V - 480 V Current range: 9 - 14 A Overload supervision Supply connection on terminal Cable gland diameter: 13 - 25 mm CSA approved	1
815	554 20 04	Starter 356 3-phase 60 Hz 575V - 600 V Current range: 6 - 10 A Overload supervision Supply connection on terminal Cable gland diameter: 9 - 18 mm CSA approved	1
815	554 21 08	Starter 356 3-phase 60 Hz 200V - 208 V Current range: 20 - 25 A Overload supervision Supply connection on terminal Cable gland diameter: 13 - 25 mm CSA approved	1
815	554 21 07	Starter 356 3-phase 60 Hz 220V - 240 V Current range: 17 - 23 A Overload supervision Supply connection on terminal Cable gland diameter: 13 - 25 mm CSA approved	1

Pos. No	Part. No	Denomination	Qty/Version
			281
815	554 21 05	Starter	1
		356 3-phase 60 Hz 440V - 480 V Current range: 9 - 14 A Overload supervision Supply connection on terminal Cable gland diameter: 13 - 25 mm CSA approved	
		356 3-phase 50/60 Hz 380V - 415 V Current range: 9 - 14 A Overload supervision Supply connection on terminal Cable gland diameter: 13 - 25 mm CSA approved	
815	554 21 04	Starter	1
		356 3-phase 60 Hz 575V - 600 V Current range: 6 - 10 A Overload supervision Supply connection on terminal Cable gland diameter: 13 - 25 mm CSA approved	
816	736 65 04	Wear part kit 50HZ MT	1
816	736 65 05	Wear part kit 60HZ MT	1
816	736 65 06	Wear part kit 50HZ HT	1
816	736 65 07	Wear part kit 60HZ HT	1
817	736 66 09	Hydraulic repair kit MT	1
		WEAR PROT.UPPER:PU WEAR PROT.LOWER:PU	
817	736 66 10	Hydraulic repair kit HT	1
		WEAR PROT.UPPER:PU WEAR PROT.LOWER:PU	
900	782 81 07	Basic repair kit	1
		NBR PLUGIN 20MM, ACTIVE WCCR/WCCR;WCCR/A1203	
900,1	82 68 45	Retaining ring	1
900,1	83 30 14	Ball bearing 20X52X22.2 MM	1
900,2	83 33 13	Ball bearing 20X52X15 MM	1
900,3	83 94 68	Pressure equalizer L=510 MM	1
900,5	769 94 30	Mechanical seal	1



ООО «Бауманс Груп» - официальный партнер фирмы Flygt в России.

Тел: +7 495 121 49 50

Эл. почта: info@baumgroup.ru

Сайт: www.baumgroup.ru